

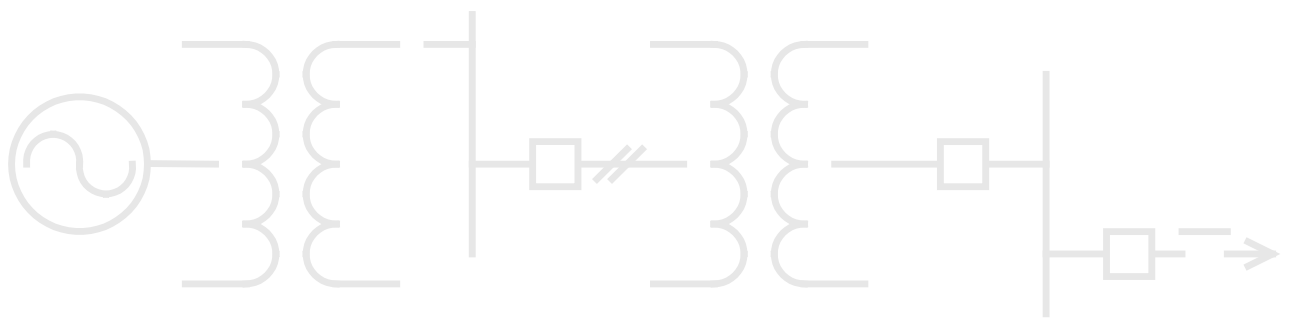
IEC 61850 Client (DCA) for the Multifunction Controller Platform

Conformance Statement

Associated with NTEK-A027M-OCS

Version 1.00 Revision 0

Associated Software Release: Version 1.00



COPYRIGHT NOTICE

© 2019, General Electric Company. All rights reserved.

The Software Product described in this documentation may only be used in accordance with the applicable License Agreement. The Software Product and Associated Material are deemed to be “commercial computer software” and “commercial computer software documentation,” respectively, pursuant to DFAR Section 227.7202 and FAR Section 12.212, as applicable, and are delivered with Restricted Rights. Such restricted rights are those identified in the License Agreement, and as set forth in the “Restricted Rights Notice” contained in paragraph (g) (3) (Alternate III) of FAR 52.227-14, Rights in Data-General, including Alternate III (June 1987).

If applicable, any use, modification, reproduction release, performance, display or disclosure of the Software Product and Associated Material by the U.S. Government shall be governed solely by the terms of the License Agreement and shall be prohibited except to the extent expressly permitted by the terms of the License Agreement.

The information contained in this online publication is the exclusive property of General Electric Company, except as otherwise indicated. You may view, copy and print documents and graphics incorporated in this online publication (the “Documents”) subject to the following: (1) the Documents may be used solely for personal, informational, non-commercial purposes; (2) the Documents may not be modified or altered in any way; and (3) General Electric Company withholds permission for making the Documents or any portion thereof accessible via the internet. Except as expressly provided herein, you may not use, copy, print, display, reproduce, publish, license, post, transmit or distribute the Documents in whole or in part without the prior written permission of General Electric Company. If applicable, any use, modification, reproduction, release, performance, display, or disclosure of the Software Product and Associated Material by the U.S. Government shall be governed solely by the terms of the License Agreement and shall be prohibited except to the extent expressly permitted by the terms of the License Agreement.

The information contained in this online publication is subject to change without notice. The software described in this online publication is supplied under license and may be used or copied only in accordance with the terms of such license.

TRADEMARK NOTICES

GE and  are trademarks and service marks of General Electric Company.

* Trademarks of General Electric Company.

IEC is a registered trademark of Commission Electrotechnique Internationale.

Other company or product names mentioned in this document may be trademarks or registered trademarks of their respective companies.

Contents

1. Abstract Communication Service Interface (ACSI) Conformance Tables	5
---	---

Tables

Table 1: ACSI Basic Conformance Statement 5

Table 2: ACSI Models Conformance Statement 6

Table 3: ACSI Services Conformance Statement..... 7

1. Abstract Communication Service Interface (ACSI) Conformance Tables

The tables in this document are identical to those given in IEC® 61850-7-2, except for the Value/comments column. This column shows the compliance of the MCP IEC 61850 Client to the ACSI.

Table 1: ACSI Basic Conformance Statement

		Client/ subscriber	Server/ publisher	Value/ comments
DCA-server roles				
B11	Server side (of TWO-PARTY-APPLICATION-ASSOCIATION)	–	c1	No
B12	Client side of (TWO-PARTY-APPLICATION-ASSOCIATION)	c1	–	Yes
SCSMs supported				
B21	SCSM : IEC 61850-8-1 used			Yes
B22	SCSM : IEC 61850-9-1 used			No
B23	SCSM : IEC 61850-9-2 used			No
B24	SCSM : other			No
Generic substation event model (GSE)				
B31	Publisher side	–	O	No
B32	Subscriber side	O	–	No
Transmission of sampled value model (SVC)				
B41	Publisher side	–	O	No
B42	Subscriber side	O	–	No
c1 – shall be 'M' if support for LOGICAL-DEVICE model has been declared. O – Optional M – Mandatory DG – Design Goal				

Table 2: ACSI Models Conformance Statement

		Client/ subscriber	Server/ publisher	Value/ comments
If Server side (B11) or DCA side (B12) supported				
M1	Logical device	c2	c2	Yes
M2	Logical node	c3	c3	Yes
M3	Data	c4	c4	Yes
M4	Data set	c5	c5	Yes
M5	Substitution	0	0	No
M6	Setting group control	0	0	No
	Reporting			
M7	Buffered report control	0	0	Yes
M7-1	sequence-number			Yes
M7-2	report-time-stamp			Yes
M7-3	reason-for-inclusion			Yes
M7-4	data-set-name			Yes
M7-5	data-reference			Yes
M7-6	buffer-overflow			Yes
M7-7	entryID			Yes
M7-8	BufTm			Yes
M7-9	IntgPd			Yes
M7-10	GI			Yes
M8	Unbuffered report control	0	0	Yes
M8-1	sequence-number			Yes
M8-2	report-time-stamp			Yes
M8-3	reason-for-inclusion			Yes
M8-4	data-set-name			Yes
M8-5	data-reference			Yes
M8-6	BufTm			Yes
M8-7	IntgPd			Yes
M8-8	GI			Yes
	Logging	0	0	No
M9	Log control	0	0	No

		Client/ subscriber	Server/ publisher	Value/ comments
M9-1	IntgPd			No
M10	Log	O	O	No
M11	Control	M	M	Yes
If GSE (B31/B32) is supported				
	GOOSE	O	O	No
M12-1	entryID			No
M12-2	DataRefInc			No
M13	GSSE	O	O	No
If SVC (B41/B42) is supported				
M14	Multicast SVC	O	O	No
M15	Unicast SVC	O	O	No
M16	Time	M	M	N/A
M17	File Transfer	O	O	Yes
<p>c2 – shall be 'M' if support for LOGICAL-NODE model has been declared.</p> <p>c3 – shall be 'M' if support for DATA model has been declared.</p> <p>c4 – shall be 'M' if support for DATA-SET, Substitution, Report, Log Control, or Time model has been declared.</p> <p>c5 – shall be 'M' if support for Report, GSE, or SV models has been declared.</p> <p>M – Mandatory</p>				

Table 3: ACSI Services Conformance Statement

	Services	AA: TP/MC	Client/ subscriber	Server/ publisher	Comments Value
Server (Clause 6)					
S1	ServerDirectory	TP		M	No
Application association (Clause 7)					
S2	Associate		M	M	Yes
S3	Abort		M	M	Yes
S4	Release		M	M	Yes
Logical device (Clause 8)					
S5	LogicalDeviceDirectory	TP	M	M	No
Logical node (Clause 9)					
S6	LogicalNodeDirectory	TP	M	M	No
S7	GetDataValues	TP	O	M	No
Data (Clause 10)					
S8	GetDataValues	TP	M	M	Yes

	Services	AA: TP/MC	Client/ subscriber	Server/ publisher	Comments Value
S9	SetDataValues	TP	O	O	Yes
S10	GetDataDirectory	TP	O	M	No
S11	GetDataDefinition	TP	O	M	Yes
Data set (Clause 11)					
S12	GetDataSetValues	TP	O	M	Yes
S13	SetDataSetValues	TP	O	O	No
S14	CreateDataSet	TP	O	O	Yes
S15	DeleteDataSet	TP	O	O	Yes
S16	GetDataSetDirectory	TP	O	O	Yes
Substitution (Clause 12)					
S17	SetDataValues	TP	M	M	No
Setting group control (Clause 13)					
S18	SelectActiveSG	TP	O	O	No
S19	SelectEditSG	TP	O	O	No
S20	SetSGValues	TP	O	O	No
S21	ConfirmEditSGValues	TP	O	O	No
S22	GetSGValues	TP	O	O	No
S23	GetSGCBValues	TP	O	O	No
Reporting (Clause 14)					
Buffered report control block (BRCB)					
S24	Report	TP	c6	c6	Yes
S24-1	data-change (dchg)				Yes
S24-2	qchg-change (qchg)				Yes
S24-3	data-update (dupd)				Yes
S25	GetBRCBValues	TP	c6	c6	Yes
S26	SetBRCBValues	TP	c6	c6	Yes
Unbuffered report control block (URCB)					
S27	Report	TP	c6	c6	Yes
S27-1	data-change (dchg)				Yes
S27-2	qchg-change (qchg)				Yes
S27-3	data-update (dupd)				Yes
S28	GetURCBValues	TP	c6	c6	Yes
S29	SetURCBValues	TP	c6	c6	Yes

	Services	AA: TP/MC	Client/ subscriber	Server/ publisher	Comments Value
c6 – shall declare support for at least one (BRCB or URCB).					

Logging (Clause 14)					
Log control block					
S30	GetLCBValues	TP	M	M	No
S31	SetLCBValues	TP	O	M	No
Log					
S32	QueryLogByTime	TP	c7	M	No
S33	QueryLogAfter	TP	c7	M	No
S34	GetLogStatusValues	TP	M	M	No
c7 – shall declare support for at least one (QueryLogByTime or QueryLogAfter).					
Generic substation event model (GSE) (14.3.5.3.4)					
GOOSE-CONTROL-BLOCK					
S35	SendGOOSEMessage	MC	c8	c8	No
S36	GetGoReference	TP	O	c9	No
S37	GetGOOSEElementNumber	TP	O	c9	No
S38	GetGoCBValues	TP	O	O	No
S39	SetGoCBValues	TP	O	O	No
GSSE-CONTROL-BLOCK					
S40	SendGSSEMessage	MC	c8	c8	No
S41	GetGsReference	TP	O	c9	No
S42	GetGSSEElementNumber	TP	O	c9	No
S43	GetGsCBValues	TP	O	O	No
S44	SetGsCBValues	TP	O	O	No
c8 – shall declare support for at least one (SendGOOSEMessage or SendGSSEMessage). c9 – shall declare support if TP association is available.					
Transmission of sampled value model (SVC) (Clause 16)					
Multicast SVC					
S45	SendMSVMessage	MC	c10	c10	No
S46	GetMSVCBValues	TP	O	O	No
S47	SetMSVCBValues	TP	O	O	No
Unicast SVC					
S48	SendUSVMessage	TP	c10	c10	No
S49	GetUSVCBValues	TP	O	O	No

	Services	AA: TP/MC	Client/ subscriber	Server/ publisher	Comments Value
S50	SetUSVCBValues	TP	O	O	No
c10 – shall declare support for at least one (SendMSVMessage or SendUSVMessage).					

Control (17.5.1)					
S51	Select		M	O	Yes
S52	SelectWithValue	TP	M	O	Yes
S53	Cancel	TP	O	O	Yes
S54	Operate	TP	M	M	Yes
S55	Command-Termination	TP	M	O	Yes
S56	TimeActivated-Operate	TP	O	O	No
File transfer (Clause 20)					
S57	GetFile	TP	O	M	Yes
S58	SetFile	TP	O	O	Yes
S59	DeleteFile	TP	O	O	Yes
S60	GetFileAttributeValues	TP	O	M	Yes
Time (5.5)					
T1	Time resolution of internal clock				nearest negative power of 2 in seconds: 10
T2	Time accuracy of internal clock				T0
					T1
					T2
					T3
					T4
					T5
T3	Supported TimeStamp resolution				Nearest value of 2** -n in seconds according to 5.5.3.7.3.3: 10

MODIFICATION RECORD

VERSION	REV.	DATE	AUTHOR	CHANGE DESCRIPTION
1.00	0	2 nd May, 2019	G. LaMarre	Created.

